



HFMED®

HF-L4W LED Shadowless Operating Lamp

Model:HF-L4W LED

Color: White + dark gray

LED brand:OSRAM

Bulb qty.(pcs):112PCS

Color temperature:

1st-stage 3500K 2nd-stage 4000K

3rd-stage 4500K 4th-stage 5000K

Illumination:160,000 Lx

CRI(Ra): ≥95, Peak 96; R9: 92; R13: 95

Illuminance depth:1000mm

WHY CHOOSE US



OUR ADVANTAGE

The company keeps to the concept of being oriented by science and technology and taking quality as life. Now the company has passed the certification of ISO9001:2008, ISO13485:2003, CE and SGS.



MANAGEMENT

"Quality first,Credit first,Service first" is our tent. Huifeng are looking forward to sincere cooperation with you. Let's advance and pursue a wonderful future by mutual efforts.



SALES MARKET

all has its domestic sales amount coming out at the top and some products have ready sale in Southeast Asia. Its products can be found in all



Official QR code



HFMED®

YOUR IDEAL SUPGICAL LIGHT SUPPLIER
SHANGHAI HUIFENG MEDICAL INSTRUMENT CO., LTD.
 Address: NO.885, Qixing Road, Nicheng Town, Pudong New Area, Shanghai, China.
 Tel: +86-021-58084992
 Mob: +86-13918165133
 Email: lisa@huifeng-co.com
 web: <http://en.huifeng-co.com>



HF-L4W

Shadowless Operating Lamp



HFMED

SHANGHAI HUIFENG MEDICAL INSTRUMENT CO.,LTD

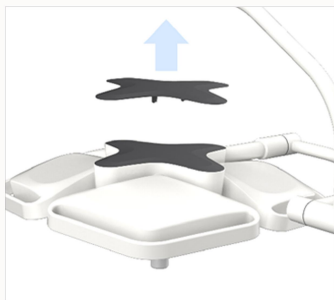


Precise dimming control for various lighting request

With 16-stage illuminance adjustment, 4-stage color temperature adjustment, 16-stage spot size adjustment by electrical control, endo mode, R9 mode, green light (GL) mode.

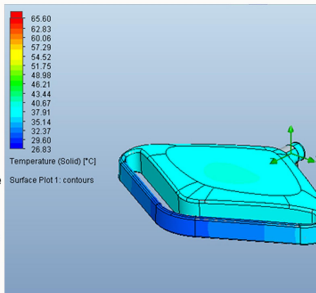
Unique maintenance room for quick and easy maintenance

The innovative design of photoelectric separation keeps the circuit board away from heat sources. It increases the service life time, also improves the simplicity, economy and timeliness of the maintenance. What's more, the control box can also be easily opened and maintained.



Original thermal management system to effectively reduce the temperature of chip core

The cast high-heat-conducting aluminum alloy radiator increases the internal heat-dissipation area, which can instantly derive heat, and with high-efficiency LED bulbs, allow to effectively reduce the temperature of the lamp and improve the service life of the lamp.



High-density light mixing system makes for precise, handy dimming

Using HFMED®'s special high-density light mixing technology, it provides high brightness with great quality, and it's with 16-stage illuminance adjustment from 40000lux to 160000lux and 4-stage color temperature adjustment from 3500K to 5000K.

Main Technical Data

HF-L4W LED Shadowless Operating Lamp	
illuminance	160,000Lux
Colour temperature	3500±300K,4000±300K,4500±300K, 5000±300K
Color	White + dark gray
illuminance depth	1000mm
CRI(Ra)	≥95, Peak 96; R9: 92; R13: 95
light field size by electric control	120-250mm
Power supply voltage	35-105W
LED brand	OSRAM
Material	aluminium alloy+PC
Bulb qty.(pcs)	112PCS
Endo Mode	Available
R9 Mode	Available
Green Light Mode	Available